

Group Chair

Peter C. Adamson, M.D.
adamson@email.chop.edu

Group Vice Chair

Susan Blaney, M.D.
smblaney@txch.org

Chief Operating Officer

Elizabeth O'Connor, M.P.H.
econnor@childrensoncology
group.org

Chief Administrative Officer

Maria Hendricks, M.S.N., R.N.
C.C.R.P.
hendricksm@email.chop.edu

Acting Group Statistician

Meenakshi Devidas, Ph.D.
mdevidas@cog.ufl.edu

**Acting Associate Group
Statistician**

Todd Alonzo, Ph.D.
talonzo@childrensoncology
group.org

Group Chair's Office

*The Children's Hospital
of Philadelphia*
3501 Civic Center Blvd
CTRB 10060
Philadelphia, PA 19104

P 215 590 6359
F 215 590 7544

Group Operations Center

222 E. Huntington Drive
Suite 100
Monrovia, CA 91016

P 626 447 0064
F 626 445 4334

**Statistics & Data Center
Headquarters**

222 E. Huntington Drive
Suite 100
Monrovia, CA 91016

P 626 447 0064
P 626 445 4334

Gainesville Office

6011 NW 1st Place
Gainesville, FL 32607

P 352 273 0556
F 352 392 8162

A National Cancer Institute
supported clinical cooperative
group and Equal Opportunity
Affirmative Action Institutions

Date: September 2013

To: All first time nursing and patient advocate attendees
Any interested nurses

Dear colleagues:

If you haven't attended a COG meeting before, or if you are still wondering how to make the most of your time at a COG meeting, please plan to attend the informal orientation session planned for Wednesday, October 9, 7am - 8am. [The meeting place is to be determined – please check at the COG Registration area for a posted announcement.] Please plan to pick up breakfast at the buffet and bring it with you. We will share ways to navigate the potentially confusing (but interesting) format of the COG meeting, including how to prioritize and maximize your time while at the meeting. And we will discuss how you can become more involved in COG. Bring your questions. We will be there to help in any way we can.

Please also join us at these Nursing Discipline meetings:

October 9

2pm – 4pm

Nursing Education/Clinical Trials Subcommittee Joint Symposium: Patient-Family and Professional Education in the COG

October 10

2pm – 4pm

Nursing Evidence-Based Practice/Clinical Trials Interactive Session

4pm – 6pm

Nursing Continuing Education and Plenary Session

We hope to see you Wednesday for breakfast at 7am (not too early for nurses) and at the sessions on both Wednesday and Thursday. If you have questions, please contact Jenn Wofford at wofford_j@kids.wustl.edu or Katy Murphy at kmurphy@chw.org

Most sincerely,

Jenn Wofford and Katy Murphy
Members-At-Large,
COG Nursing Discipline Steering Committee

WELCOME!

**ATTENTION ALL NURSES AND PATIENT
ADVOCATES
WHO ARE FIRST TIME MEETING ATTENDEES!**

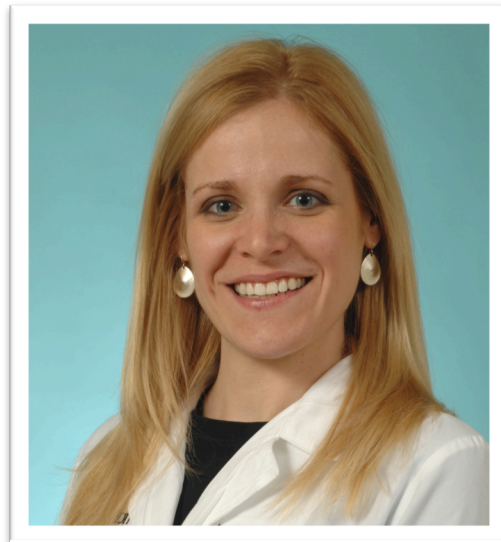
**PLEASE PLAN TO ATTEND
AN INFORMAL ORIENTATION SESSION**

**WEDNESDAY 10/9/2013
7- 8 AM**

**BRING YOUR QUESTIONS! LOOK FORWARD TO
MEETING YOU!**



Katy Murphy



Jenn Wofford

COG NURSING DISCIPLINE MEMBERS-AT-LARGE